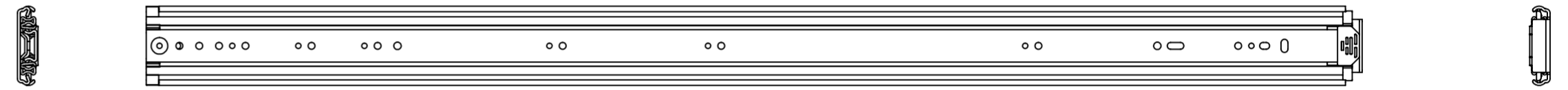
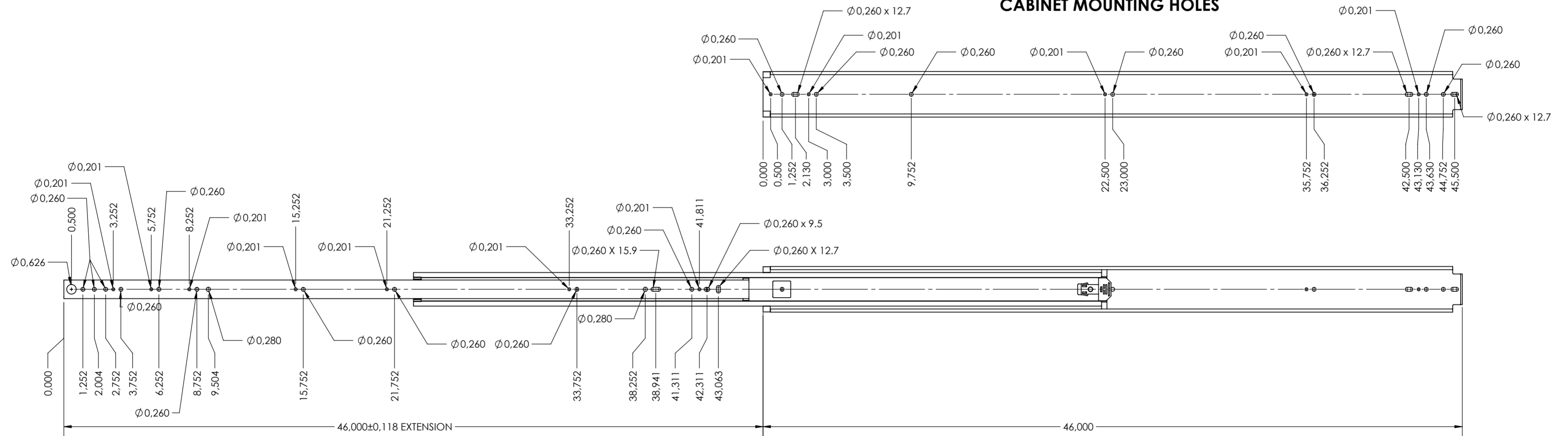


SCALE 1:1



CABINET MOUNTING HOLES



RECOMMENDED HARDWARE:
 CABINET- M6 OR 1/4 BUTTON HEAD SCREWS
 DRAWER- M6 OR 1/4 BUTTON HEAD SCREWS

| | | | |
|--|--------------------|--|--|
| general tolerances | | DIN ISO 128-30 missing dimensions see 3D = theor. intersection | |
| ISO 2768-m | | | |
| This drawing remains our property and may not be multiplied neither be disclosed to third parties (§§1,3 and 5 from the copyright Act (UrhG)) covered according to DIN ISO 16016 | | | |
| (k) | | scale: | material, semi finished parts: A2 |
| (l) | | 1:5 | STEEL |
| (m) | | surface: | (technical requirements Fulterer) |
| (n) | | date | description: FULL EXTENSION SIDE MOUNT HEAVY DUTY DRAWER SLIDE NON-DISCONNECT |
| (o) | | drawn 27-07-2018 | |
| (p) | | name | drawing number: 5400.46-GA.T018 |
| (q) | | HB | |
| (r) | | proven 00-00-0000 | replaces version date: |
| (s) | | 00 | |
| (t) | | Fulterer | |
| (u) | | | |
| (v) | | Fulterer AG & Co KG A-6890 Lustenau / Austria | |
| (w) | | Fulterer AG CH-9430 St. Margrethen | |
| (x) | UPDATE TITLE BLOCK | 19-03-2019 | HB |
| (y) | changes | date | na. |
| (z) | | | |