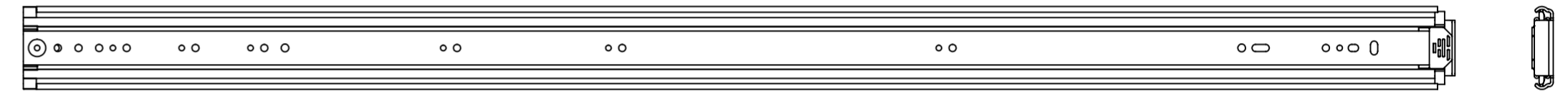
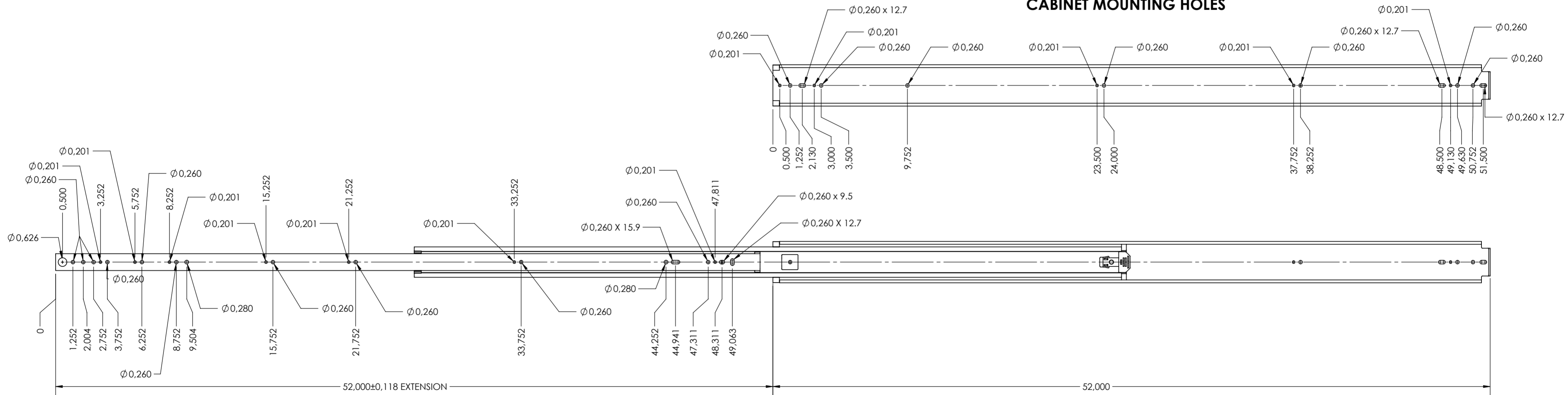


SCALE 1:1



CABINET MOUNTING HOLES



RECOMMENDED HARDWARE:
 CABINET- M6 OR 1/4 BUTTON HEAD SCREWS
 DRAWER- M6 OR 1/4 BUTTON HEAD SCREWS

general tolerances		DIN ISO 128-30 missing dimensions see 3D = theor. intersection	
ISO 2768-m			
This drawing remains our property and may not be multiplied neither be disclosed to third parties (§§1,3 and 5 from the copyright Act (UrhG)) covered according to DIN ISO 16016			
(k)		scale:	material: STEEL
(l)		1:5	(technical requirements Fulterer)
(m)		surface:	
(n)		drawn	description:
(o)		date	FULL EXTENSION SIDE MOUNT
(p)		name	HEAVY DUTY DRAWER SLIDE
(q)		proven	NON-DISCONNECT
(r)		00-00-0000	
(s)		00	
(t)			
(u)			
(v)			
(w)			
(x)			
(y)			
(z)			
(aa)	UPDATE TITLE BLOCK	19-03-2019	drawing number:
(ab)	changes	date	5400.52-GA.T018
(ac)		na.	replaces version date:
(ad)			