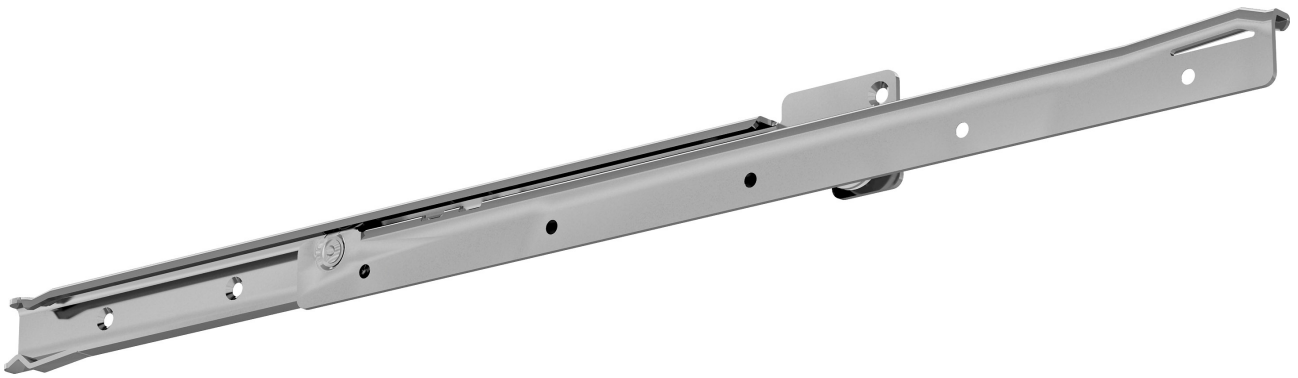








# FR 1051 SCC

Regular Extension Drawer Slide  
with Lateral Stability



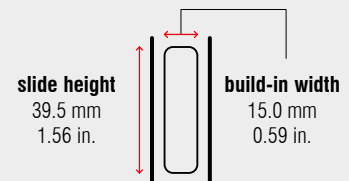
## Specifications

-  side mount
-  15.0 mm / 0.59 in.
-  dynamic up to 50 kg / 110 lbs.
-  synthetic silent rollers
-  stainless steel 1.4509 / 441
-  -25 °C to +80 °C  
-13 °F to +176 °F

## Characteristics

- single-sided captive profile (right)
- rear backstop
- self-closing
- compatible with full extension drawer slide FR 6010 SCC
- available as heat-resistant version up to +210 °C (+410 °F)

## Dimensions



Length		Extension		Weight		Item No.
mm	inch	mm	inch	kg	lbs.	
400	15.75	294	11.57	0.95	2.09	1102
450	17.72	344	13.54	1.05	2.31	1103
500	19.69	394	15.51	1.20	2.63	1104
550	21.65	424	16.69	1.34	2.94	1105
600	23.62	474	18.66	1.43	3.15	1106
650	25.59	524	20.63	1.56	3.43	1107
700	27.56	574	22.60	*	*	1108
750	29.53	624	24.57	*	*	1109

Packing Unit – Sets per Box, all Lengths: 10

\* on request