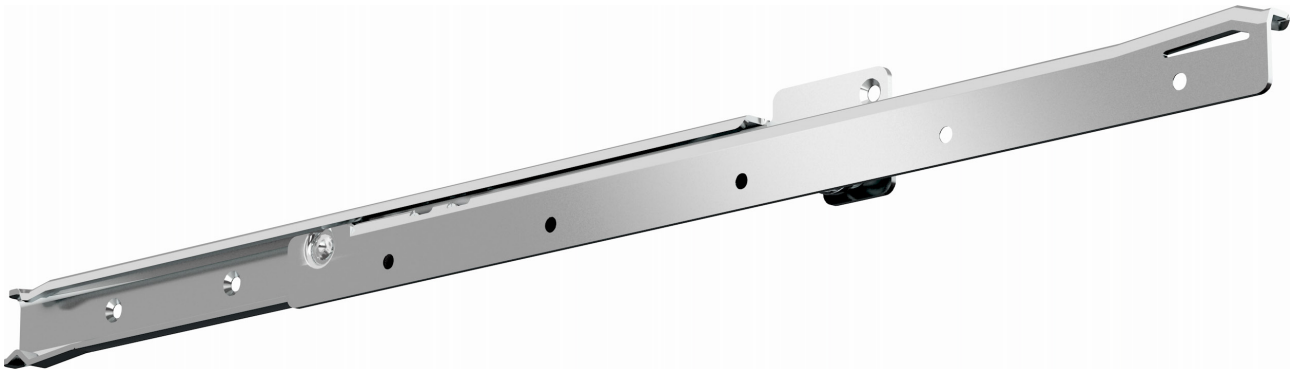








# FR 1052 SCC

Regular Extension Drawer Slide  
with Lateral Stability



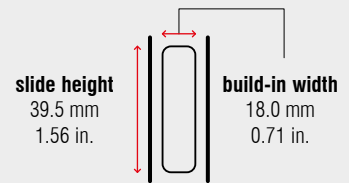
### Specifications

-  side mount
-  18.0 mm / 0.71 in.
-  dynamic up to 50 kg / 110 lbs.
-  synthetic silent rollers
-  stainless steel 1.4509 / 441
-  -25 °C to +80 °C  
-13 °F to +176 °F

### Characteristics

- single-sided captive profile (right)
- rear backstop
- self-closing
- compatible with full extension drawer slide FR 790 SCC and FR 785 SCC

### Dimensions



Length		Extension		Weight		Item No.
				per set		
mm	inch	mm	inch	kg	lbs.	
400	15.75	294	11.57	0.95	2.09	1601
450	17.72	344	13.54	1.07	2.37	1602
500	19.69	394	15.51	1.18	2.61	1603
550	21.65	424	16.69	1.30	2.87	1604
600	23.62	474	18.66	1.42	3.13	1605
650	25.59	524	20.63	1.52	3.35	1606
700	27.56	574	22.60	*	*	*
750	29.53	624	24.57	*	*	*

Packing Unit – Sets per Box, all Lengths: 10

\* on request