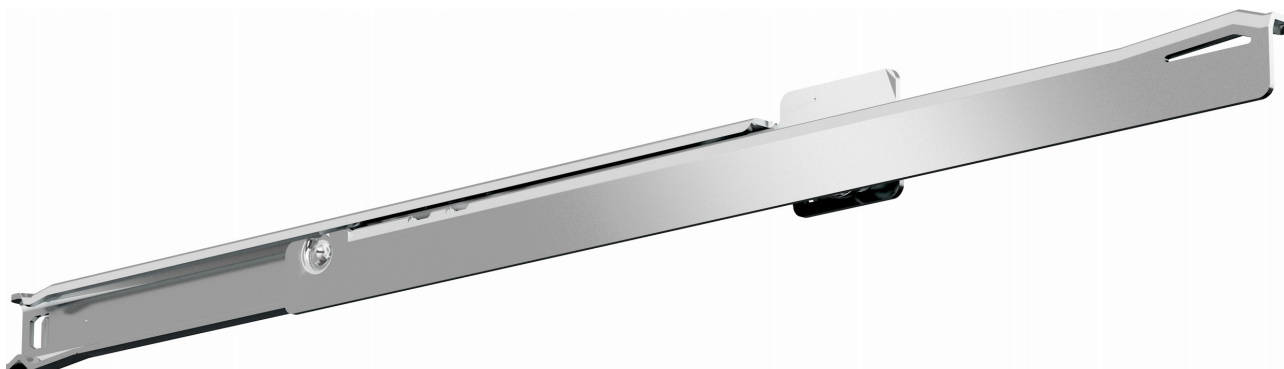








# FR 1052 SCC SMT | Regular Extension Drawer Slide with Lateral Stability



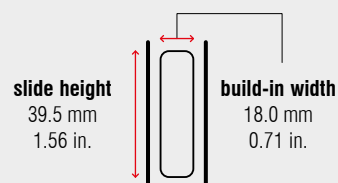
## Specifications

-  side mount
-  18.0 mm / 0.71 in.
-  dynamic up to 50 kg / 110 lbs.
-  synthetic silent rollers
-  stainless steel 1.4509 / 441
-  -25 °C to +80 °C  
-13 °F to +176 °F

## Characteristics

- cabinet profile with bayonet mounting tabs and safety nose
- tool-less quick assembly of the cabinet profile
- single-sided captive profile (right)
- rear backstop
- self-closing
- compatible with full extension drawer slide FR 785 SCC SMT

## Dimensions



Length		Extension		Weight		Item No.
mm	inch	mm	inch	kg	lbs.	
400	15.75	294	11.57	0.96	2.11	<b>5302</b>
450	17.72	344	13.54	1.05	2.32	*
500	19.69	394	15.51	1.17	2.57	<b>5304</b>
550	21.65	424	16.69	1.29	2.84	*
600	23.62	474	18.66	1.40	3.10	<b>5306</b>
650	25.59	524	20.63	1.60	3.53	*
700	27.56	574	22.60	*	*	*
750	29.53	624	24.57	1.78	3.92	*

Packing Unit – Set per Box, all Lengths: 10

\* on request