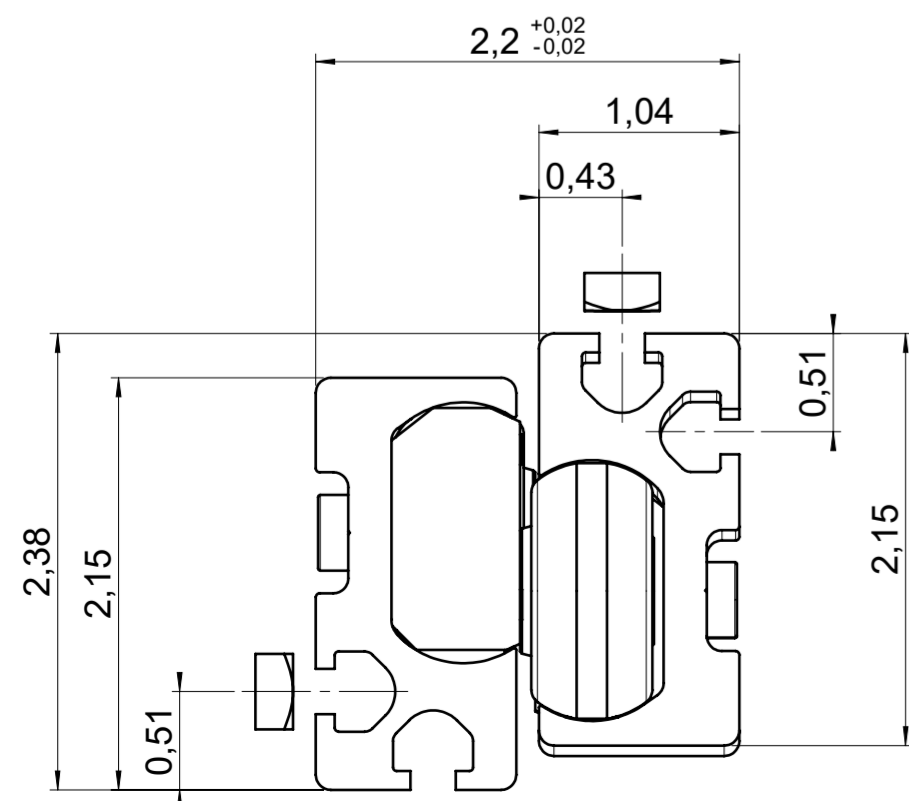
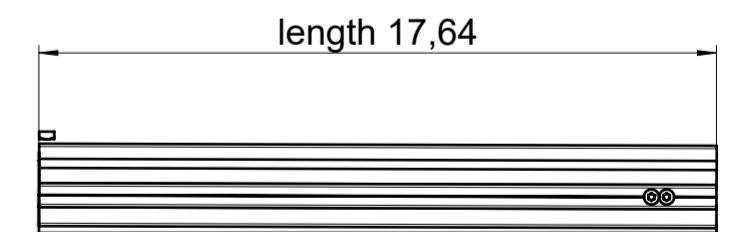
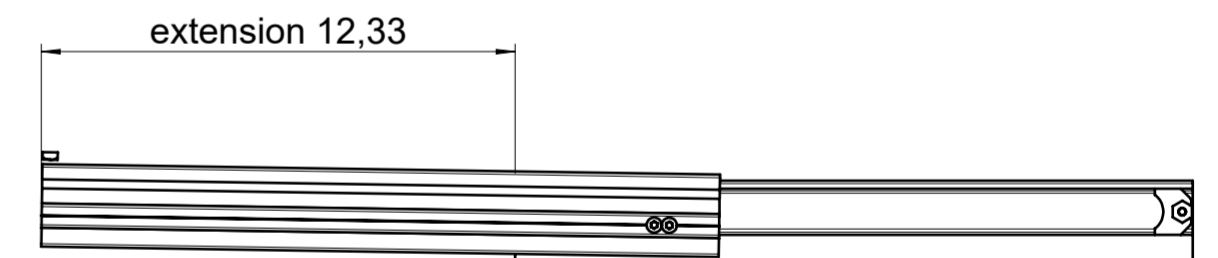
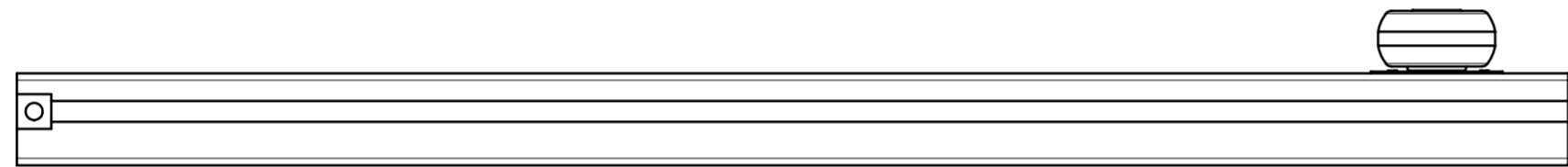
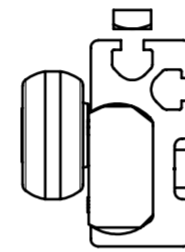
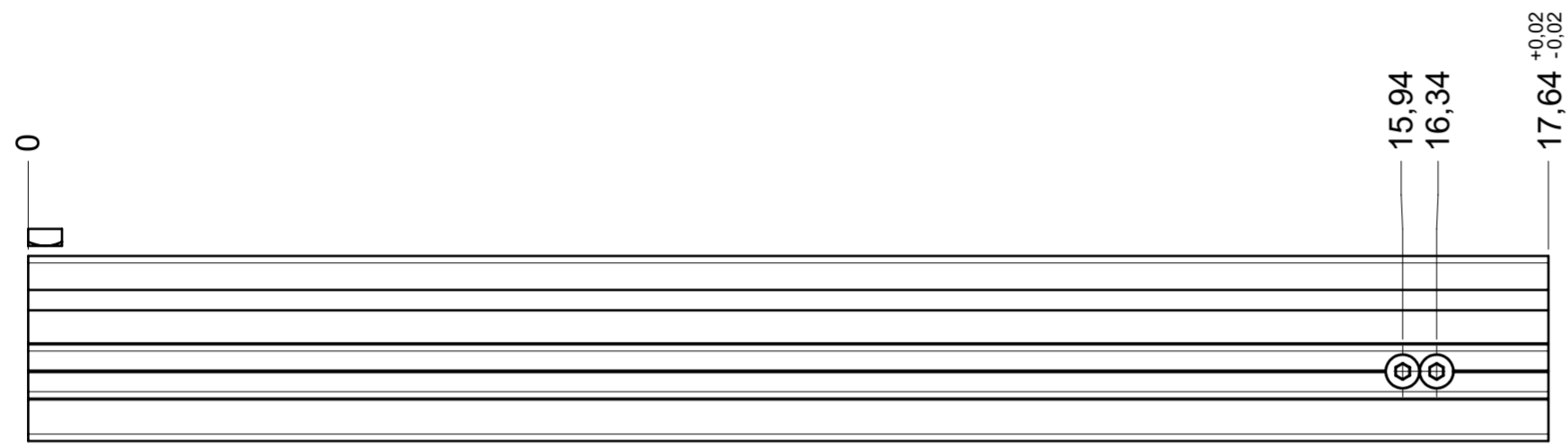
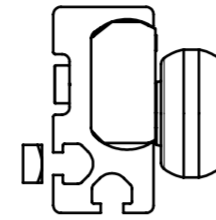
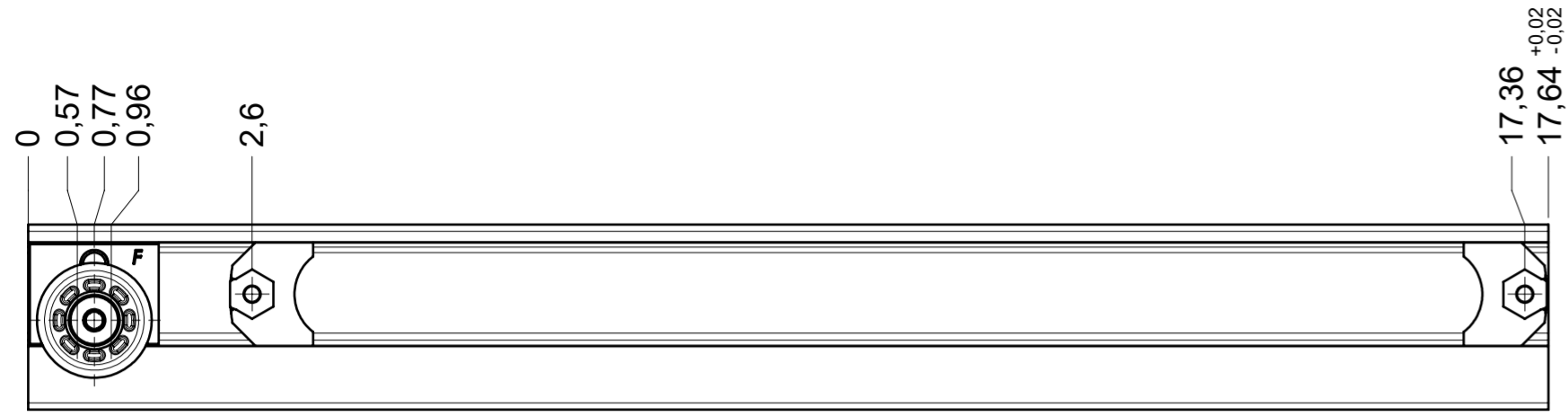


drawn left



final approval

customer name:

signed by:

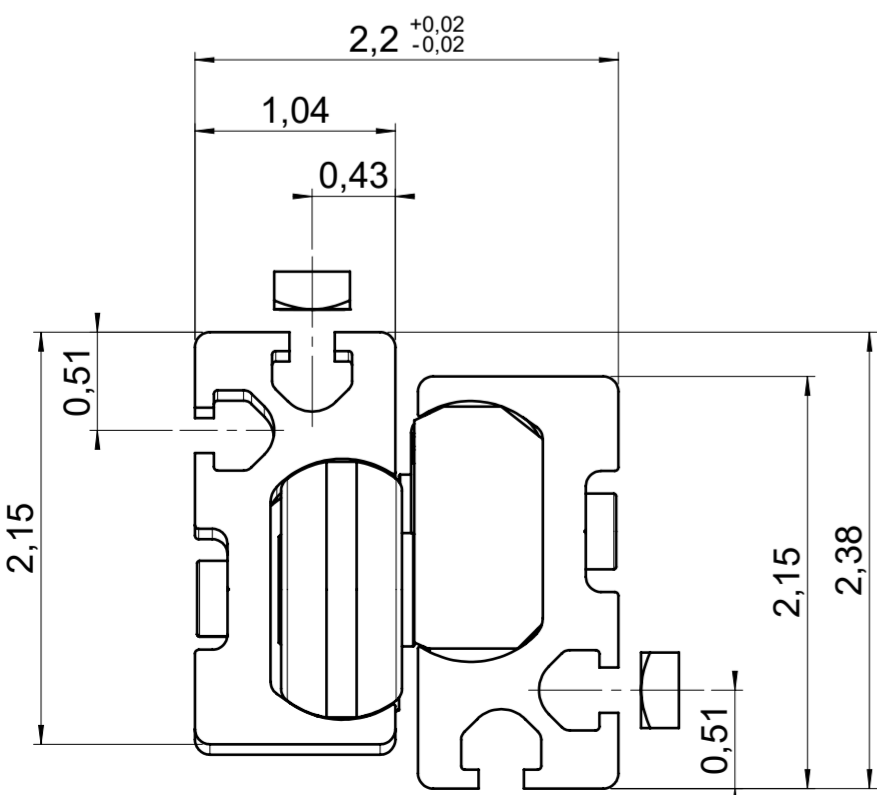
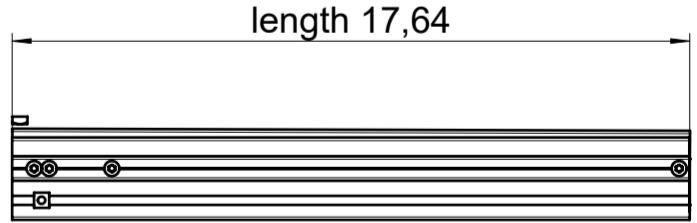
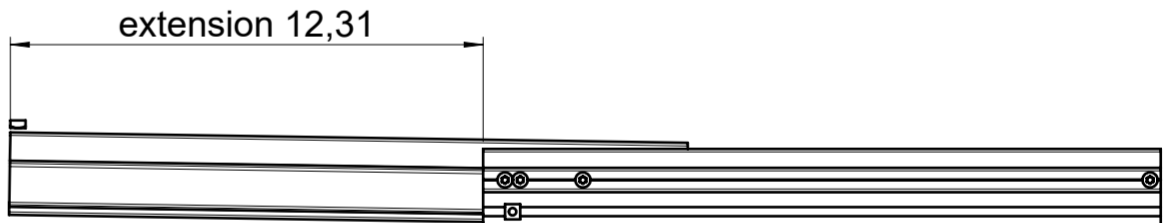
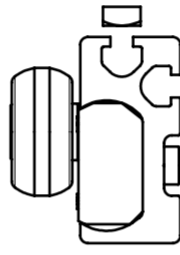
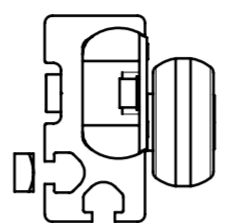
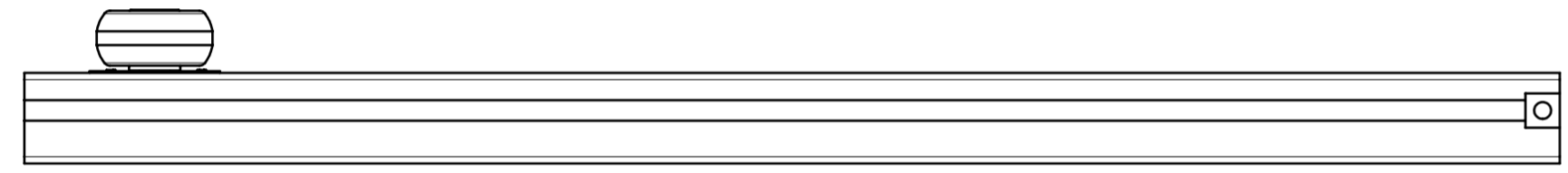
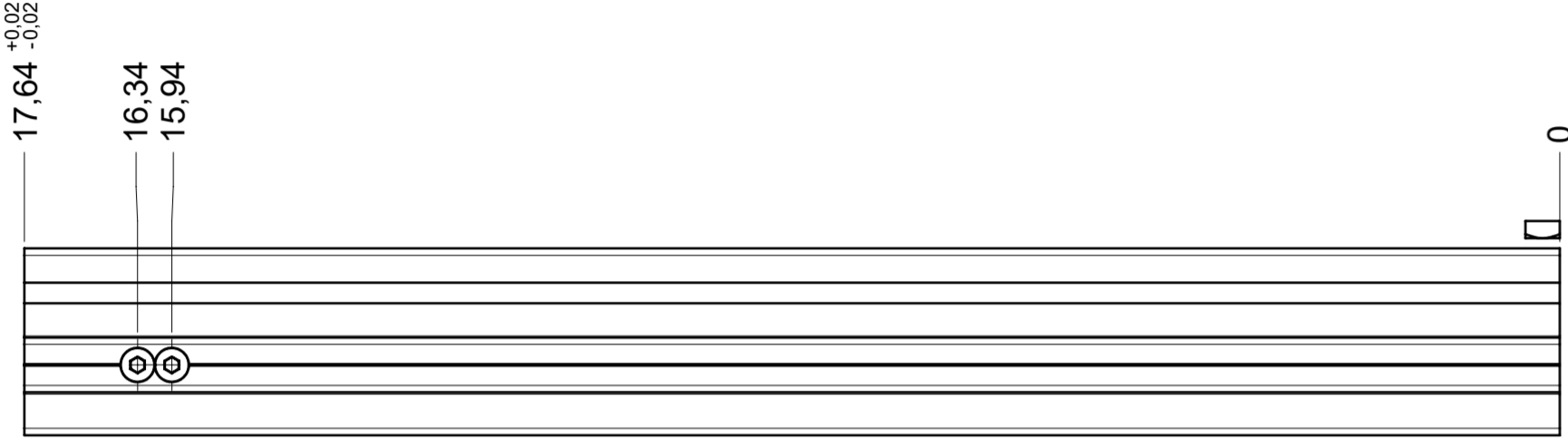
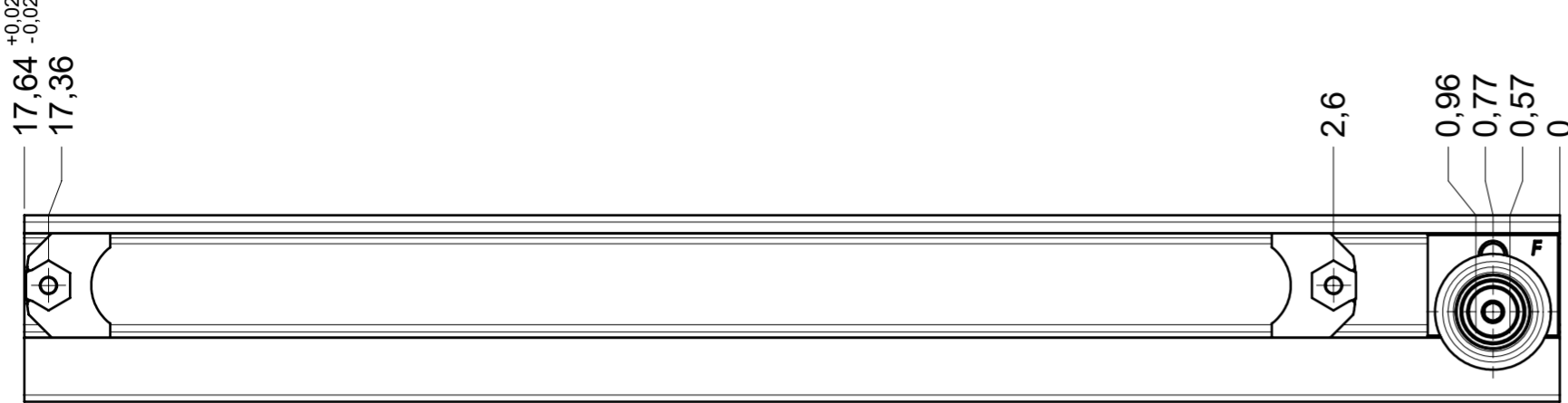
date:

all dimensions in inch

DIN ISO 128-30
missing dimensions see 3D
= theor. intersection

This drawing remains our property and may not be multiplied neither be disclosed to third parties (§§1,3 and 5 from the copyright Act (UrhG)) covered according to DIN ISO 16016				scale:	surface:	material, semi finished parts:	A2
(k)				1:2		CS	
(l)				date	name	(technical requirements Fulterer)	
(h)				drawn 01-02-2023	ex	description: FR 9000 / 50 EN (inch) progressive-action full-extension drawerslide / side mount	
(g)				proven 01-03-2023	pr		
(f)						drawing number: 9000.450-GA.0000.li	
(e)							
(d)				Fulterer AG & Co KG A-6890 Lustenau / Austria		replaces version date:	
(c)				Fulterer AG CH-9430 St. Margrethen			
(b)				changes	date	na.	
(a)							

drawn right



final approval

customer name:

signed by:

date:

all dimensions in inch				DIN ISO 128-30 missing dimensions see 3D = theor. intersection	
This drawing remains our property and may not be multiplied neither be disclosed to third parties (§§1,3 and 5 from the copyright Act (UrhG)) covered according to DIN ISO 16016					
scale: 1:2		surface:		material, semi finished parts: CS (technical requirements Fulterer)	
(k)		drawn	01-02-2023	date	name
(l)		proven	01-03-2023	ex	pr
(h)		Fulterer			
(g)					
(f)					
(e)					
(d)					
(c)		Fulterer AG & Co KG A-6890 Lustenau / Austria		description: FR 9000 / 45 EN (inch) progressive-action full-extension drawerslide / side mount	
(b)		Fulterer AG CH-9430 St. Margrethen		drawing number: 9000.450-GA.0000.re	
(a)		changes		replaces version date:	
ind.		date	na.		