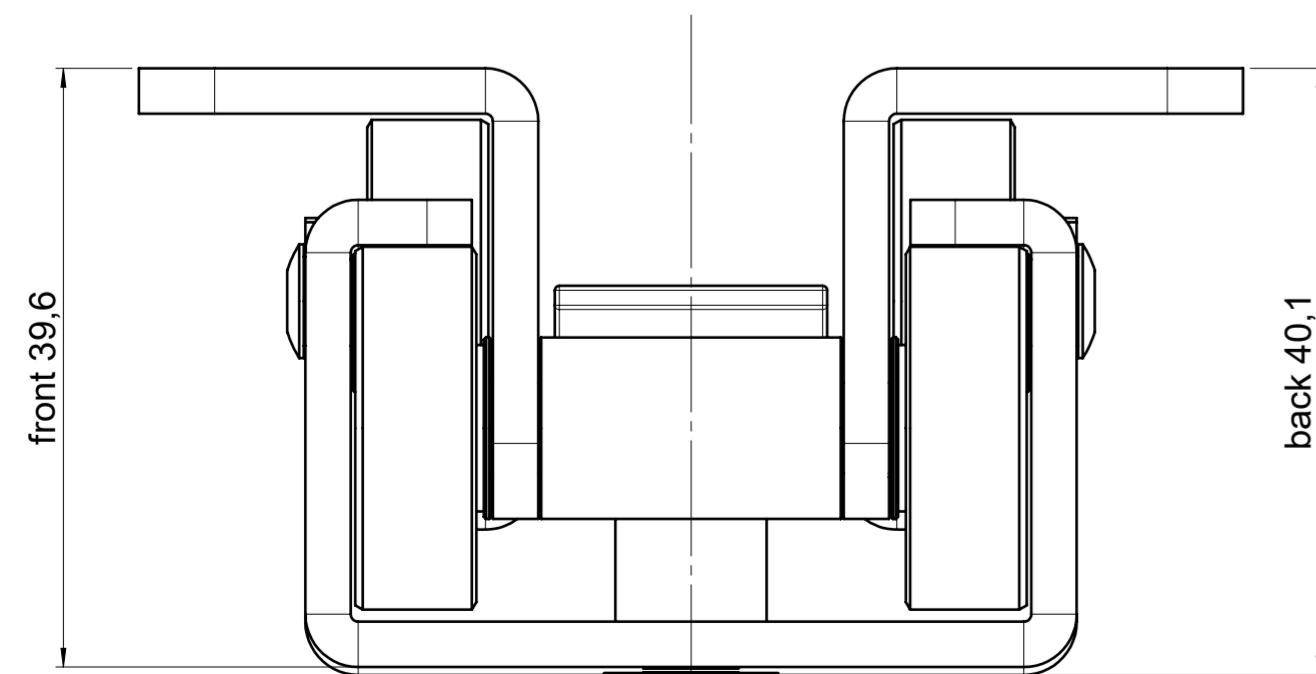
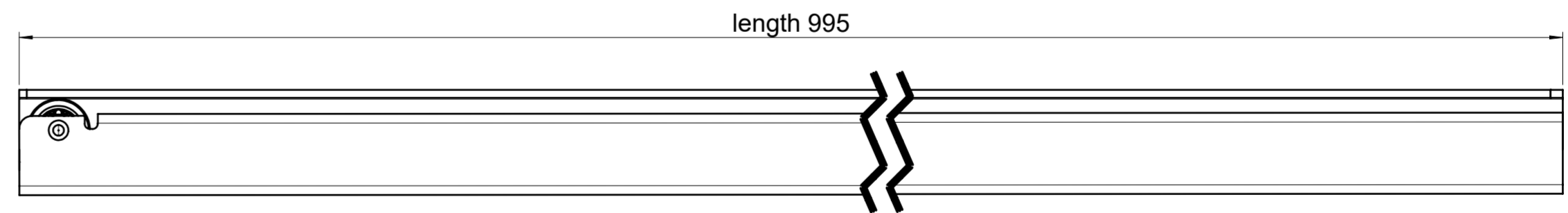
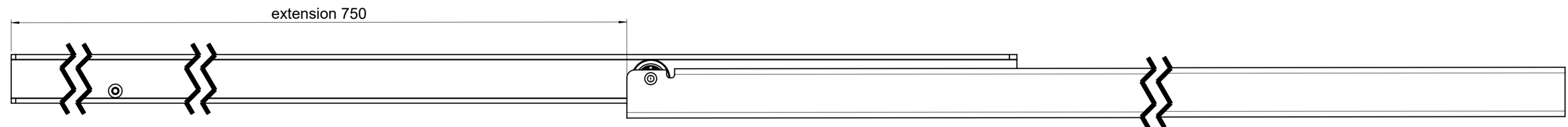
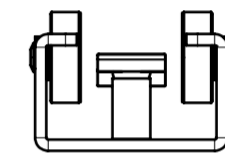
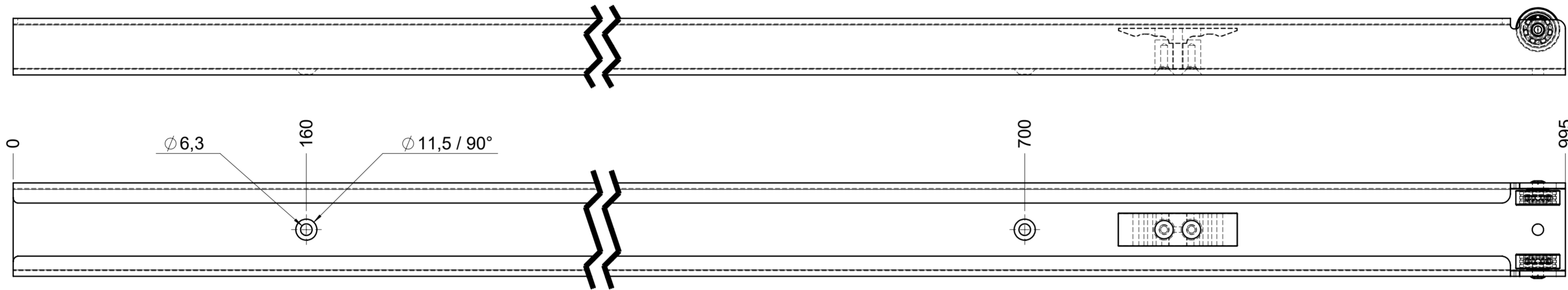
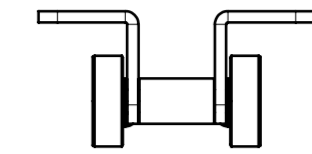
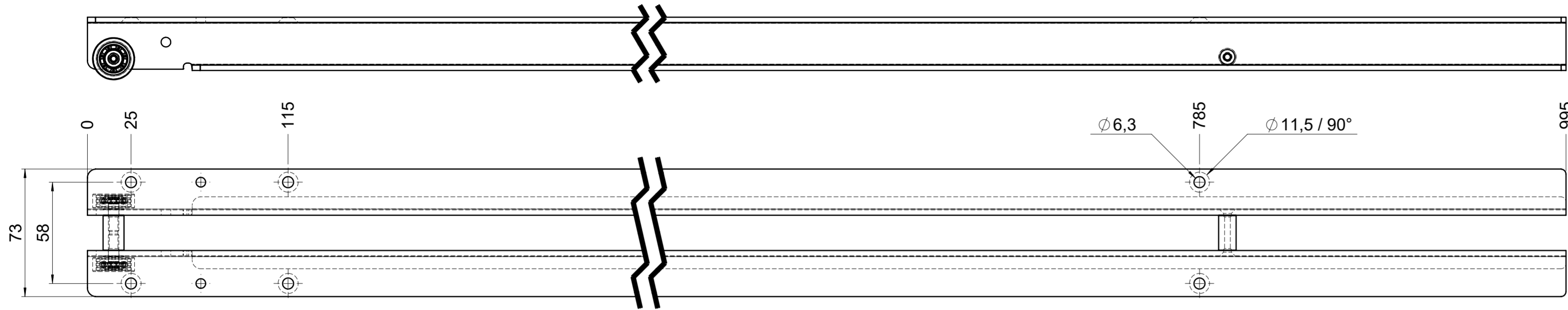


drawn left (right mirrorimage)

dimensions without coating / maximum coating allowed 0.1mm



final approval

customer name:

signed by:

date:

all dimensions in mm				DIN ISO 128-30 missing dimensions see 3D = theor. intersection	
This drawing remains our property and may not be multiplied neither be disclosed to third parties (§§1,3 and 5 from the copyright Act (UrhG)) covered according to DIN ISO 16016					
scale: 1:2		surface:		material, semi finished parts: STEEL (technical requirements Fulterer)	
(k)		drawn	17-01-2023	date	name
(l)		proven	01-02-2023	ex	pr
(m)					
(n)					
(o)					
(p)					
(q)					
(r)		Fulterer AG & Co KG A-6890 Lustenau / Austria		description: FR 505T / 99.5 EN (mm) regular-extension vertical pull-out slide	
(s)		Fulterer AG CH-9430 St. Margrethen		drawing number: 505T.995-GA.0000	
(t)		changes		replaces version date:	
(u)		date	na.		