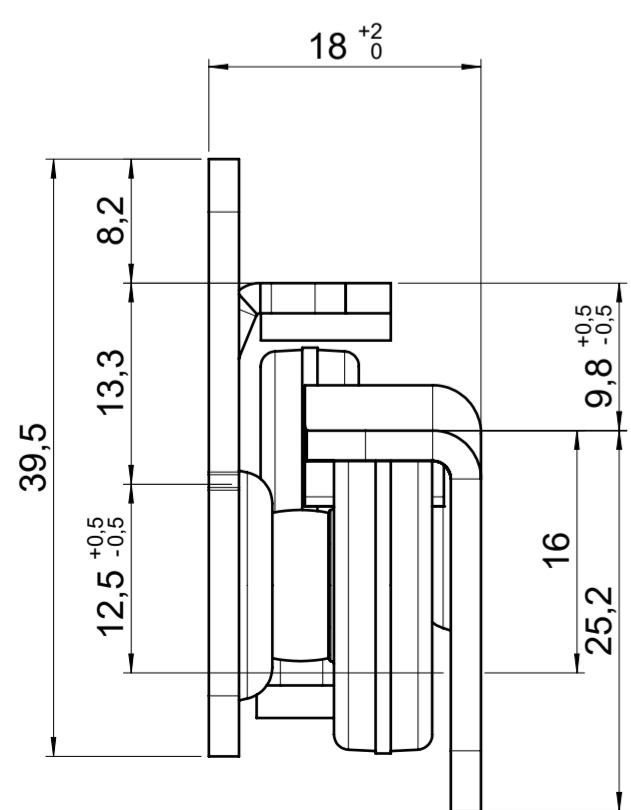
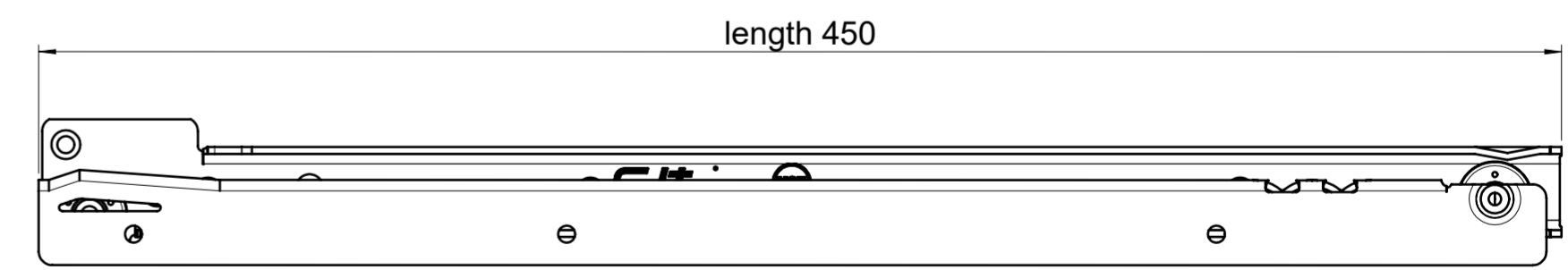
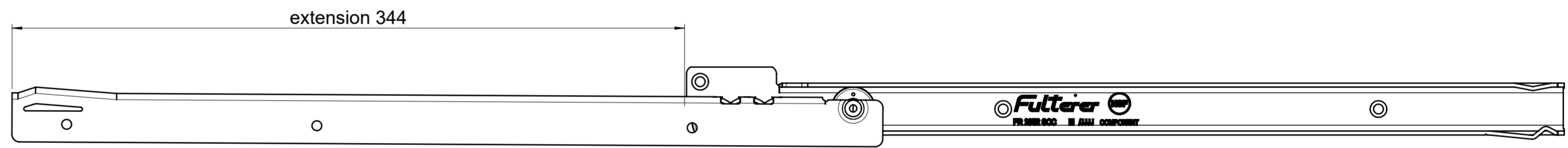
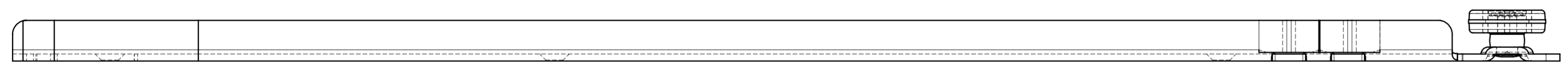
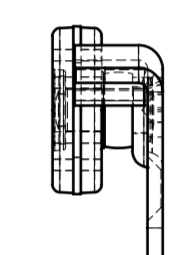
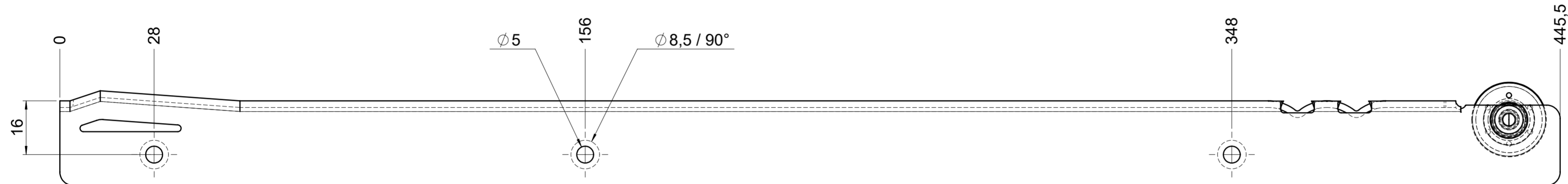
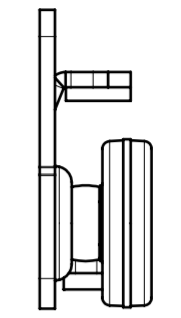
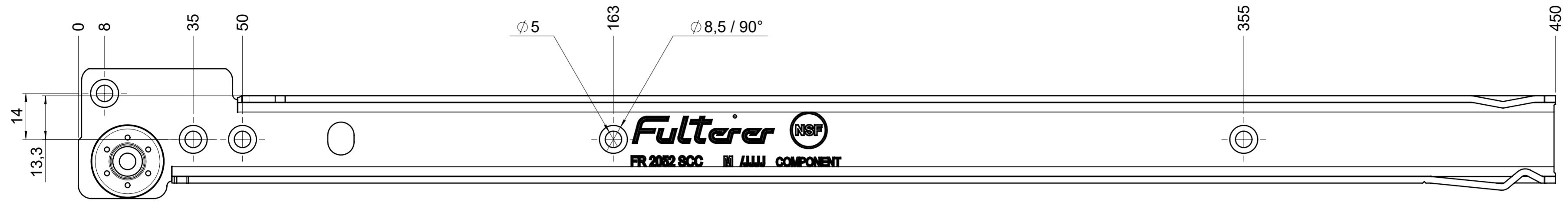


drawn left



**final approval**

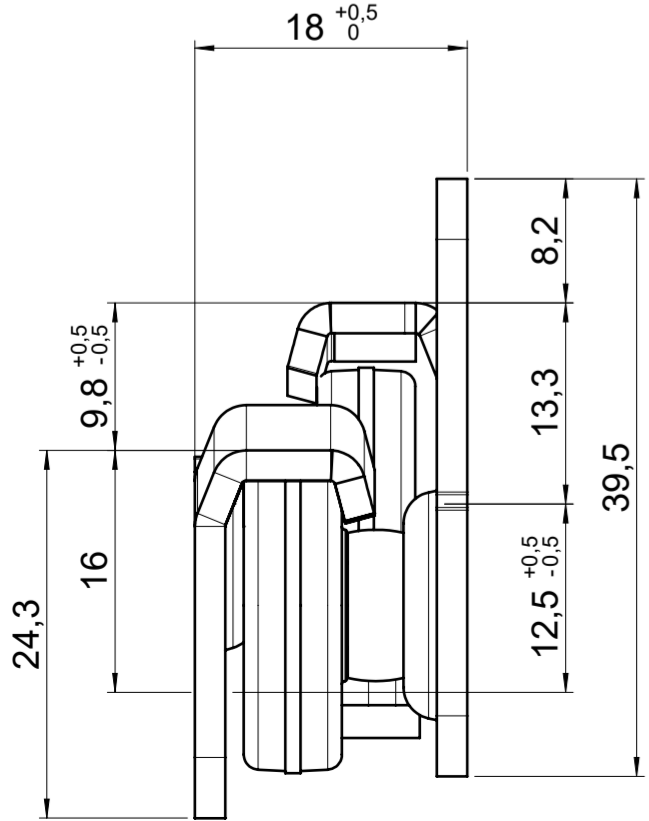
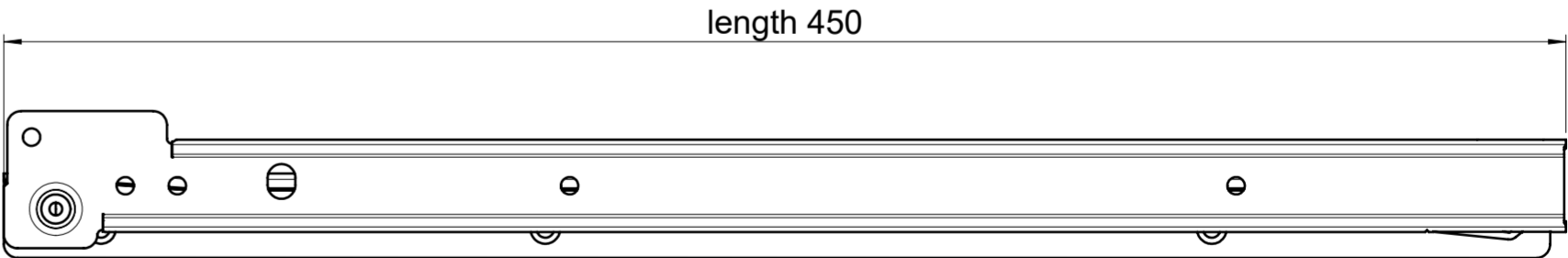
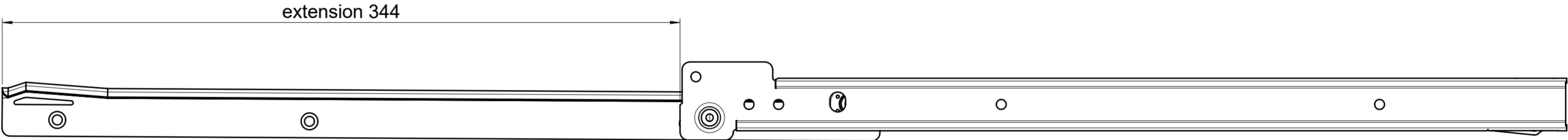
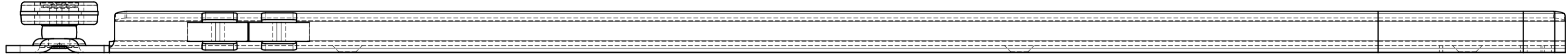
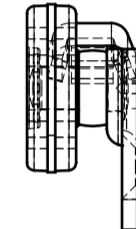
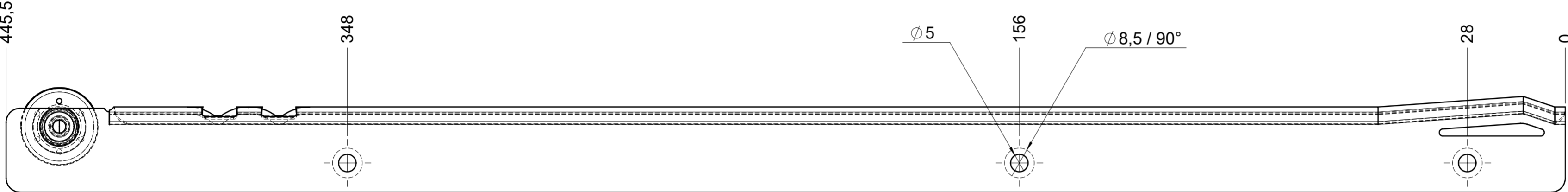
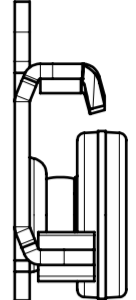
customer name:

signed by:

date:

all dimensions in mm				DIN ISO 128-30 missing dimensions see 3D = theor. intersection	
This drawing remains our property and may not be multiplied neither be disclosed to third parties (§§1,3 and 5 from the copyright Act (UrhG)) covered according to DIN ISO 16016					
scale: 1:1		surface:		material, semi finished parts: CS (technical requirements Fulterer)	
drawn	01-02-2023	date	name	description: FR 1052 / 45 CS EN (mm) regular-extension drawerside / side mount	
proven	01-03-2023	date	pr	drawing number: CS# 1052.450-GA.0000.li	
				replaces version date:	
<b>Fulterer AG &amp; Co KG</b> A-6890 Lustenau / Austria <b>Fulterer AG</b> CH-9430 St. Margrethen					
ind.	changes	date	na.		

drawn right



**final approval**

customer name:

signed by:

date:

**all dimensions in mm**

DIN ISO 128-30  
missing dimensions see 3D  
= theor. intersection

This drawing remains our property and may not be multiplied neither be disclosed to third parties (§§1,3 and 5 from the copyright Act (UrhG)) covered according to DIN ISO 16016				scale:	surface:	material, semi finished parts:
(k)				1:1		CS
(l)				date	name	(technical requirements Fulterer)
(h)				drawn 01-02-2023	ex	description: FR 1052 / 45 CS EN (mm) regular-extension drawerside / side mount
(g)				proven 01-03-2023	pr	
(f)				<b>Fulterer</b>		drawing number: <b>CS# 1052.450-GA.0000.re</b>
(e)						
(d)				Fulterer AG & Co KG A-6890 Lustenau / Austria		replaces version date:
(c)				Fulterer AG CH-9430 St. Margrethen		
(b)				changes	date	na.
(a)						