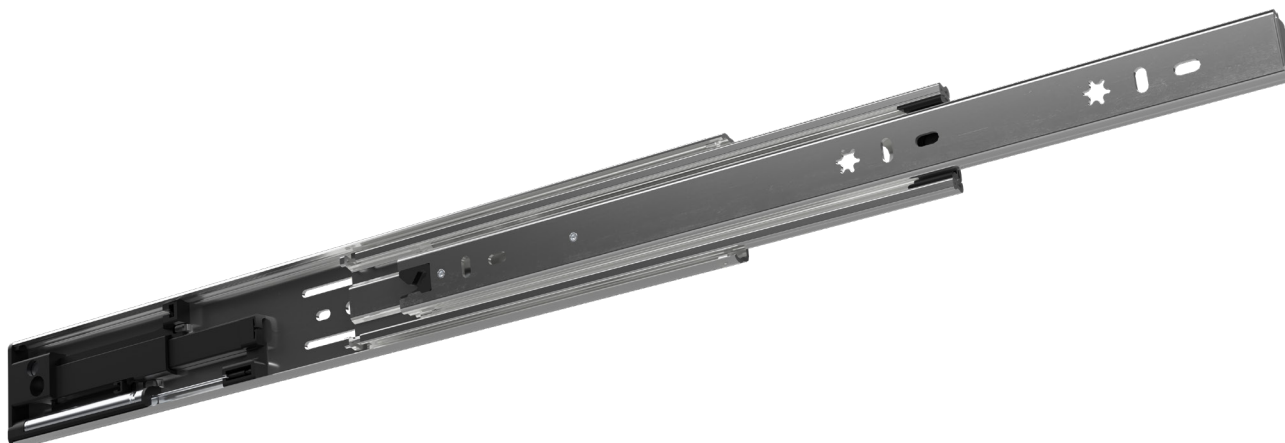








FR 5210 OE ECD

Over Extension Ball Bearing Slide



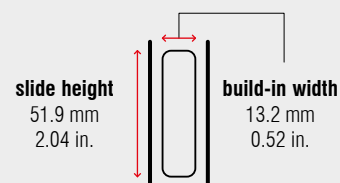
Specifications

-  side mount
-  13.2 mm / 0.52 in.
-  dynamic up to 90 kg / 198 lbs.
-  ball bearing cages
-  steel, zinc plated
-  +5 °C to +40 °C
+41 °F to +104 °F

Characteristics

- pitch 32 mm (1.26 in.) compatible hole locations
- drawer profile with disconnect release trigger
- symmetrical design
- with hold close detent
- over extension of 25 mm (0.98 in.)

Dimensions



Length		Extension		Weight		Item No.
				per set		zinc plated
mm	inch	mm	inch	kg	lbs.	
400	15.75	425	16.73	*	*	400110
450	17.72	475	18.70	*	*	400111
500	19.69	525	20.67	*	*	400112
550	21.65	575	22.64	*	*	400113
600	23.62	625	24.61	*	*	400115
650	25.59	675	26.58	*	*	400116
700	27.56	725	28.54	*	*	*

Packing Unit – Sets per Box: from 400 to 450 mm: **10** | from 500 to 550 mm: **8** | from 600 to 700 mm: **6**

* on request