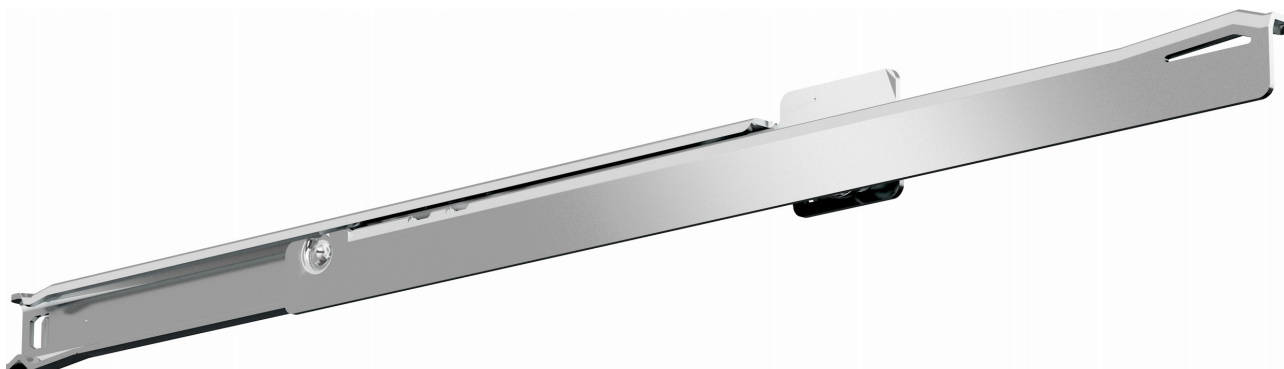








FR 1052 SCC SMT | Regular Extension Drawer Slide with Lateral Stability



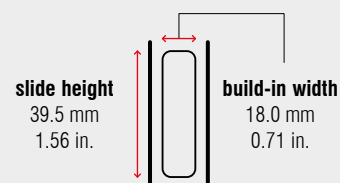
Specifications

-  side mount
-  18.0 mm / 0.71 in.
-  dynamic up to 50 kg / 110 lbs.
-  synthetic silent rollers
-  stainless steel 1.4509 / 441
-  -25 °C to +80 °C
-13 °F to +176 °F

Characteristics

- cabinet profile with bayonet mounting tabs and safety nose
- tool-less quick assembly of the cabinet profile
- single-sided captive profile (right)
- rear backstop
- self-closing
- compatible with full extension drawer slide FR 785 SCC SMT

Dimensions



Length		Extension		Weight		Item No.
mm	inch	mm	inch	kg	lbs.	
400	15.75	294	11.57	0.96	2.11	5302
450	17.72	344	13.54	1.05	2.32	*
500	19.69	394	15.51	1.17	2.57	5304
550	21.65	424	16.69	1.29	2.84	*
600	23.62	474	18.66	1.40	3.10	5306
650	25.59	524	20.63	1.60	3.53	*
700	27.56	574	22.60	*	*	*
750	29.53	624	24.57	1.78	3.92	*

Packing Unit – Set per Box, all Lengths: 10

* on request