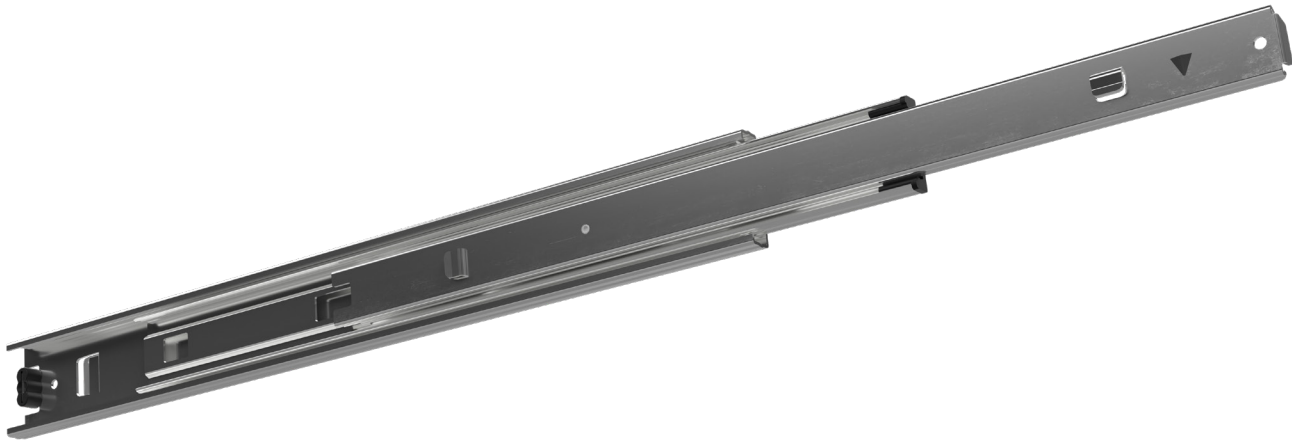







# FR 5046 SMT | Full Extension Ball Bearing Slide



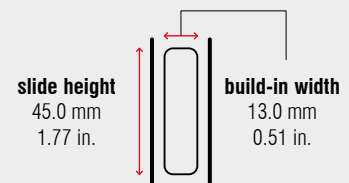
## Specifications

-  side mount
-  13.0 mm / 0.51 in.
-  dynamic up to 45 kg / 100 lbs.
-  ball bearing cages
-  steel, zinc plated

## Characteristics

- cabinet and drawer profiles with Standard Mounting Tabs (SMT) and lift out prevention
- drawer profile with disconnect release trigger
- with hold close detent
- optional with 25 mm (0.98 in.) over extension

## Dimensions



Length		Extension		Weight		Item No.	Item No.
				per set		1.5 mm / 16 ga. zinc plated	0.9 mm / 20 ga. zinc plated
mm	inch	mm	inch	kg	lbs.		
250	9.84	250	9.84	*	*	*	*
300	11.81	300	11.81	*	*	*	*
350	13.78	350	13.78	*	*	*	*
400	15.75	400	15.75	*	*	*	*
450	17.72	450	17.72	*	*	*	*
500	19.69	500	19.69	*	*	*	*
550	21.65	550	21.65	*	*	*	*
600	23.62	600	23.62	*	*	*	*
650	25.59	650	25.59	*	*	*	*
700	27.56	700	27.56	*	*	*	*

Packing Unit – Sets per Box, all Lengths: 15

\* on request