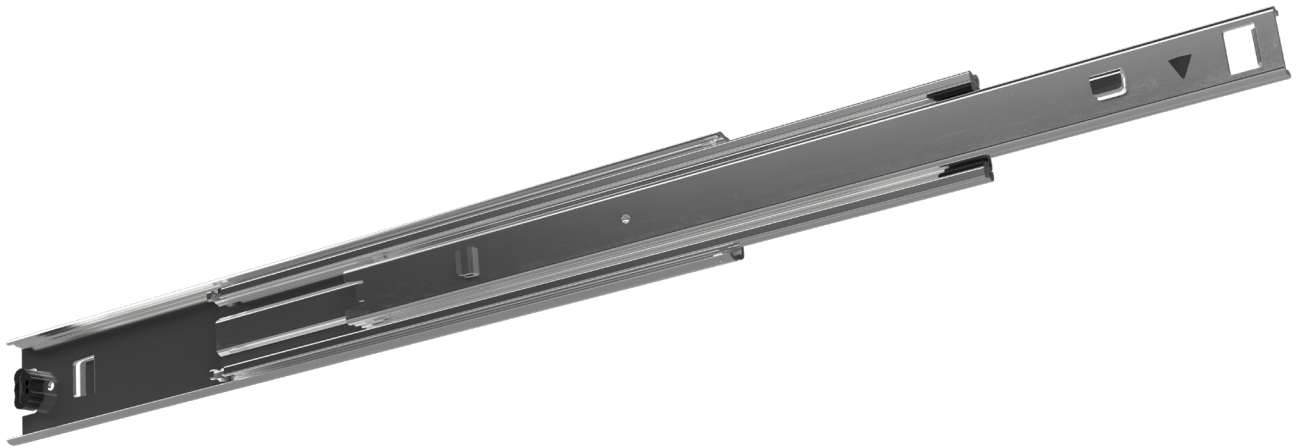


FR 5210 OE SMT | Over Extension Ball Bearing Slide



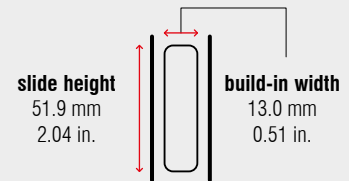
Specifications

-  side mount
-  13.0 mm / 0.51 in.
-  dynamic up to 90 kg / 198 lbs.
-  ball bearing cages
-  steel, zinc plated

Characteristics

- cabinet and drawer profiles with Standard Mounting Tabs (SMT) and lift out prevention
- drawer profile with disconnect release trigger
- with hold close detent
- over extension of 25 mm (0.98 in.)

Dimensions



Length		Extension		Weight		Item No.	Item No.
				per set		1.5 mm / 16 ga. zinc plated	0.9 mm / 20 ga. zinc plated
mm	inch	mm	inch	kg	lbs.		
300	11.81	325	12.80	*	*	400650	*
350	13.78	375	14.76	*	*	400651	*
400	15.75	425	16.73	*	*	400652	*
450	17.72	475	18.70	*	*	400653	*
500	19.69	525	20.67	*	*	400654	*
550	21.65	575	22.64	*	*	400655	*
600	23.62	625	24.61	*	*	400656	*
650	25.59	675	26.58	*	*	400657	*
700	27.56	725	28.54	*	*	400658	*

Packing Unit – Sets per Box: from 300 to 450 mm: **10** | from 500 to 550 mm: **8** | from 600 to 700 mm: **6**

* on request