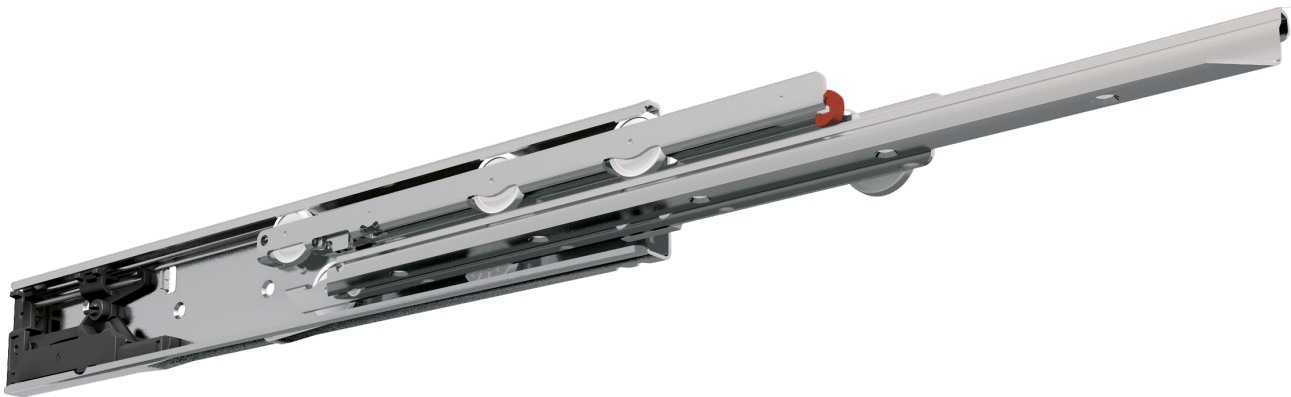








FR 786 SCC ECD

Full Extension Progressive Action Drawer Slide



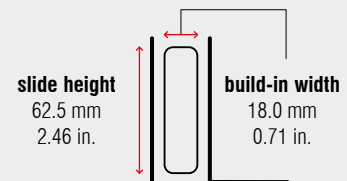
Specifications

-  bottom mount
-  18.0 mm / 0.71 in.
-  dynamic up to 60 kg / 132 lbs. (full extension)
dynamic up to 48 kg / 106 lbs. (over extension)
-  solid synthetic rollers
-  stainless steel 1.4509 / 441
-  +5 °C to +40 °C
+41 °F to +104 °F

Characteristics

- high lateral stability
- cabinet and drawer profile with screw holes
- ideal running characteristic and smoothness of running through integrated progressive action
- integrated safety clip
- dual-sided captive profile
- Easy Close Device (ECD) pre-assembled

Dimensions



Length		Extension		Extension		Weight		Item No.	Item No.
		full extension		over extension		per set		full extension	over extension
mm	inch	mm	inch	mm	inch	kg	lbs.		
335	13.19	320	12.60	395	15.55	*	*	*	*
350	13.78	335	13.19	410	16.14	1.60	3.53	8222	*
385	15.16	370	14.57	445	17.52	*	*	*	*
400	15.75	385	15.16	460	18.11	1.86	4.10	8224	*
435	17.13	420	16.54	495	19.49	*	*	*	*
450	17.72	435	17.13	510	20.08	1.91	4.21	8226	*
485	19.09	470	18.50	545	21.46	*	*	*	*
500	19.69	485	19.09	560	22.05	2.33	5.14	8228	*
535	21.06	520	20.47	595	23.43	*	*	*	*
550	21.65	535	21.06	610	24.02	2.58	5.69	8230	*
585	23.03	570	22.44	645	25.39	*	*	*	*
600	23.62	585	23.03	660	25.98	2.80	6.17	8232	*
635	25.00	620	24.41	695	27.36	*	*	*	*
650	25.59	635	25.00	710	27.95	3.03	6.68	8234	*
685	26.97	670	26.38	745	29.33	*	*	*	*
700	27.56	685	26.97	760	29.92	3.28	7.23	8236	*
735	28.94	720	28.35	795	31.30	*	*	*	*
750	29.53	735	28.94	810	31.89	*	*	*	*

Packing Unit – Sets per Box, all Lengths: 5

* on request